

5700 and 5750 Electronic Water Timer Instructions

Important: Read all instructions before inserting batteries. Be sure to save this booklet for future reference.

If you have any questions regarding your new electronic water timer, please call our free Technical Assistance Hotline (1-800-489-4568).

Important Safety Information.

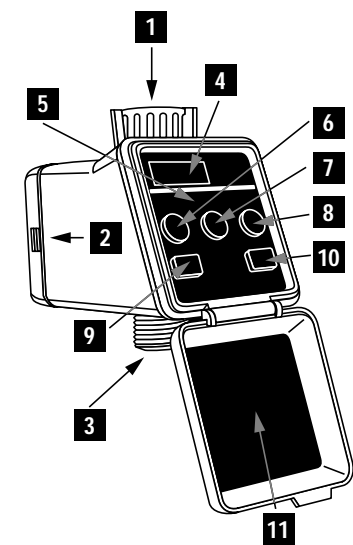
- This timer is not for use inside buildings.
- Use fabric reinforced hoses only – damaged or cracked hoses should be replaced and not used.
- The timer should not be used in damp pits or under earth's surface.
- Mount the timer in a vertical position only.
- Check connections regularly for tight sealing.
- The hose should not be pulled since connections and the housing could be damaged.
- When using for the first time, observe progress of the program for one week to ensure the unit is operating properly.
- Before a long absence, such as a vacation, insert new batteries and test your program.
- When storing, make sure the unit is completely empty of water and in a frost-free environment only. Remove the batteries.
- Use alkaline batteries only, size C. Do not use rechargeable batteries.
- Use original accessories only.

Warning: These units are not intended for inside use, i.e., offices, apartments or houses, nor for professional watering applications.

Caution: Detach timer from faucet during freezing weather. This product is intended for outdoor watering only. Do not use with water exceeding 100° F (38° C) or with pressures exceeding 100 psi. Avoid excessive pulling or tugging on the hose as damage to timer may result.

Operating Controls

1. Water connection
2. Battery compartment
3. Hose connector
4. Display for Model 5750
5. Control panel
6. Delay key for programming
7. Duration key for programming
8. Water Days key for programming
9. Program Review key
10. Manual Open/Close key
11. Housing cover (5750)

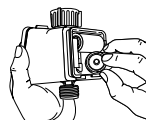


Specifications

Electronic Water Timer	5700 or 5750
Water connection	3/4"
Hose connection	3/4"
Weight	10.8 oz (without batteries)
Watering cycles (on and off)	1 per 24 hour period for 5700 2 per 24 hour period for 5750
Batteries	2 x 1.5V, Alkaline NEDA/ANSI, 14A, IEC LR 14, Type C
Number of keys	5
LCD (Liquid Crystal Display)	Size 1.4" x 0.4" (5750 only)
Programming Span	1 to 3 days
Low battery detection	Timer will stop running when battery voltage is low

Inserting & Replacing Batteries

- Use Alkaline batteries only, size C. Do not use rechargeable batteries.
- Before every battery change, turn off the timer's water supply at your outdoor faucet and then remove it from the faucet.
- Open battery compartment and insert them in accordance with the markings in the compartment.



Replacing batteries:

When batteries in either model are exhausted, the 5700 LED will flash, the 5750 LCD will show it. Timer will close the water valve and will no longer follow watering instructions.

Automatic Delay:

After you have completed programming your first watering cycle, the timer will delay for a period of 10 seconds. The timer display will clear and show 'Cycle 2', (5750 only) indicating that your first program has been accepted, and the second cycle may now be programmed. The automatic delay will occur again after you have programmed cycle two.

Installation.

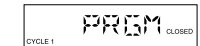
Now that your timer is programmed, it is time to install the unit to your faucet.



1. Holding the unit steady, screw the collar onto the faucet until it is finger tight. DO NOT use a wrench or pliers.
2. Attach a garden hose to the connection on the bottom of the unit. Makes sure there is a good washer in the hose fitting.
3. Make sure timer valve is closed. Turn on the water at the faucet. Your timer will now water automatically.

1. Reset.

Press DELAY and WATER DAYS keys at same time and hold 4 seconds. Release the keys, and view 'PRGM' on 5750 display or a flash on the 5700 indicating unit is reset.



2. Delay.

Press DELAY key to delay start time. Each press delays start time 1 hour from current time, up to 20 hours from now. Note: This unit does not contain a clock. Watering start time is set from current time.

If you exceed the 20 hours, the delay will 'rollover' to one hour and the timer will accept more key presses.

3. Duration.

Press DURATION key to set watering time. On the 5700, each press will increase duration 15 minutes, up to 4 hours. On the 5750, each press will increase watering duration 1 minute up to 30 minutes and 15-minute increments from 30 minutes to 4 hours.

Note: You must press this key at least once to have a valid program, otherwise the timer will flash continuously or display 'ERR'.

If you exceed the 4 hour maximum, the time will 'rollover' to 15 minutes (5700), or 1 minute (5750), and timer will continue to accept more key presses.

4. Water Days.

If you do not press the WATER DAYS key, the program entered will water today only. If you press WATER DAYS once, program will execute every day, if you press twice every other day, and if you press three times every third day. Schedule will be repeated automatically until you turn off the faucet or until batteries are exhausted.

Pressing the WATER DAYS key more than three times will cause timer to 'rollover' to water today only. Additional presses will program as explained above.

5. 'Cycle 2' and Program Acceptance.

Wait 10 seconds after the last key stroke. On 5700 light will flash indicating program is accepted. On 5750 timer display changes to 'CYCLE 2'. If you do not need an additional watering cycle, wait 10 seconds and display will change to 'AUTO'.

To program cycle two, wait 10 seconds after last key stroke in cycle one. Timer display will show 'CYCLE 2'. Continue programming second cycle as you did the first.

Wait 10 seconds for the unit to accept cycle two program data. Upon acceptance, you will see the display change to 'AUTO'.

If you do not program cycle two before the 'AUTO' display appears (after one programming cycle) but decide you would like to, you must reset the timer and start again.

The timer display will show 'ERR' if an error was made in programming, like setting overlapping water cycles, or if no duration instructions for either of the two cycles was entered.

6. Program Review.

On the 5700, when the Program Review key is pressed, the light will flash the sequence of key presses (separating each key's number of presses by a pause) On the 5750, when the Program Review key is pressed, the display will review the programs.

7. Record Your Program.

Write down the time, day and date of both programs as well as your DELAY, DURATION and WATER DAYS selections for future reference.

Day of programming SU MO TU WE TH FR SA

Date	___/___/___
Time of day	___:___
DURATION	___:___
DELAY	___hrs
WATER DAYS	Today only Every day Every second day Every third day

Sample Program.

Suppose you want your timer to start watering 4 hours from now. For a total of 45 minutes every other day. All it takes is 4 easy steps.

Step 1. Reset timer by pressing DELAY and WATER DAYS keys at the same time for 4 seconds.

Step 2. Press DELAY key 4 times (once for each of the 4 hours of desired delay time).

Step 3. Press DURATION key 3 times (each press adds 15 minutes of watering time).

On the 5750, hold the DURATION key until it scrolls to 0:45 min or press the key 31 times.

Step 4. Press WATER DAYS key twice (timer will now water every other day).

After 10 seconds, the timer will show program has been accepted with a flash or the screen clears.

On the 5750, display now reads 'CYCLE 2'. Suppose you would like to program a second cycle that will begin in 8 hours, will water for 15 minutes once a day.

Step 1 Press DELAY key 8 times.

Step 2 Hold the DURATION key until it scrolls to 0:15 minutes or press the key 15 times.

Step 3 Press WATER DAYS key once.

After 10 seconds, the timer LCD will now read 'AUTO', indicating the second program has been accepted.

Manual Operation.

Anytime after installing batteries, the valve can be opened or closed using the manual OPEN/CLOSE key.

Press the MANUAL OPEN/CLOSE key to start watering immediately. Press the same key again to stop.

Important: If left in manual mode, the valve will stay open for a period between 60 and 75 minutes and then will automatically close. This manual open time limit is designed as a safeguard that's intended to prevent flooding if the timer valve is accidentally opened. When the valve closes, it may be manually opened again, if desired.

Care and Maintenance.

The following precautions should be taken:

1. Always keep top cover closed when keyboard is not in use.
2. The timer may be used with water pressures up to 100 psi.
3. Do not leave timer on the faucet or store it outside during freezing weather. Exposure to temperatures below 32° F (0° C) may damage the unit.
4. Units must not be submerged in water or used with hot water over 100° F (38° C).
5. To ensure unit's temperature remains below 100° F (38° C), do not expose it to direct sunlight. We recommend the timer be used only in shady areas.

Periods Not In Service.

1. Look at the program record to reference time, day and date entered.
2. Programs may be reviewed by pressing the PROGRAM REVIEW key.
3. If no watering is intended for long periods (i.e., during the winter season), simply unscREW the unit from the faucet and press the MANUAL OPEN key. In the spring, it is recommended that the unit be reprogrammed and new batteries inserted.

This timer is maintenance free. Replace weak batteries immediately when the timer starts flashing on 5700 (and LOBAT appears in the display panel on model 5750). If the timer should happen to fail despite the care taken in manufacturing and testing, repair should be performed by an authorized customer service agent for L.R. Nelson Corp. (1-800-489-4968)

Trouble Shooting Guide

Problem	Probable Cause	Remedy
Improper or no display	Wrong battery contacts	1. Check for proper battery installation after reset 2. Clean battery contacts and reapply Battery & Terminal Protection Compound
Display ERR after programming and continuous flash	Programming errors due to incorrect data such as overlapping cycles or no watering durations.	Reset and reprogram
Flashes every 7-8 seconds and display shows LOBAT (5750 only)	Batteries are weak	Replace batteries and reapply battery and LOBAT Terminal Protection Compound
Turning on or off at unexpected times	Incorrect program	1. Double check the recorded time, day and date you started the program 2. Reset and reprogram
Not turning on or - off automatically	Unit is not in AUTO mode	1. Make sure that the unit is in AUTO mode 2. Double check programming data
Valve cannot be opened	No program entered	1. Make sure that the unit has manually been programmed 2. Check for proper battery installation 3. Clean battery contacts and reapply Battery & Terminal Protection Compound
Faucet connection leaks	Bad hose washer	Install a new washer. Check for worn threads
Display is dark or black	Unit is too hot	Try to shade the unit or mount in cooler place
Battery life is short	Improper battery type	Replace batteries with alkaline type, reset and reprogram the unit

If you still have problems, call our toll-free number 1-800-489-4568 any weekday (except holidays) from 8:00 AM to 5:00 PM central time. Be sure you have your unit when you call.

Regulador electrónico de agua Modelos 5700 y 5750

Importante: lea todas las instrucciones antes de poner las pilas. No olvide conservar este folleto para consultarlo en el futuro.

Si tiene preguntas referentes a su nuevo regulador electrónico de agua, por favor, llame a nuestra Línea especial de asistencia técnica: 1-800-489-4568. (Su llamada es gratuita.)

Importante información sobre seguridad.

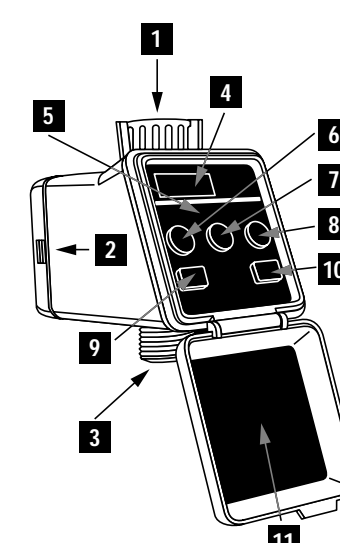
- Este regulador no es para uso dentro de edificios.
- Use solamente mangueras reforzadas con tela: las mangueras dañadas o agrietadas se deben cambiar, no se deben usar.
- El regulador no se debe usar en hoyos húmedos ni debajo de la superficie de la tierra.
- Monte el regulador exclusivamente en posición vertical.
- Revise las conexiones con regularidad, en cuanto a sellos apretados.
- No se debe jalar la manguera, ya que se podrían dañar las conexiones y el empotramiento.
- Al usarlo por primera vez, observe el progreso del programa durante una semana a fin de cerciorarse de que la unidad funciona debidamente.
- Antes de una ausencia prolongada, tal como unas vacaciones, ponga pilas nuevas y haga una prueba de su programa.
- Al almacenarla, cerciórese de que la unidad esté completamente vacía de agua y solo en un ambiente sin escarcha. Saque las pilas.
- Use exclusivamente pilas alcalinas, tamaño C. No use pilas recargables.
- Use solamente los accesorios originales.

Advertencia: estas unidades no son para uso en el interior, v.g., oficinas, apartamentos o casas, así como tampoco para operaciones de riego profesional.

Precaución: desconecte el regulador del grifo en época de heladas. Este producto es exclusivamente para riego al aire libre. No lo use con agua a más de 38°C (100°F) ni con presiones de más de 689,5 kPa (100 psi). Evite tirar excesivamente de la manguera, ya que ello podría provocar daños al regulador.

Mandos de funcionamiento

1. Conexión del agua
2. Compartimento de pilas
3. Conector de manguera
4. Visualización para el Modelo 5750
5. Panel de control
6. Tecla DELAY para programar
7. Tecla DURATION para programar
8. Tecla WATER DAYS para programar
9. Tecla PROGRAM REVIEW
10. Tecla OPEN/CLOSE MANUALLY
11. Tapa del empotramiento

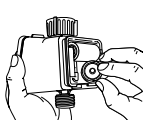


Especificaciones

Regulador electrónico de agua	5700 ó 5750
Conexión de agua	1,9 cm (3/4")
Conexión de manguera	1,9 cm (3/4")
Peso	306,18 g (10,8 onzas)
	(sin pilas)
Ciclos de riego (abierto y cerrado)	1 por período de 24 horas para el 5700 2 por período de 24 horas para el 5700
Pilas	2 alcalinas de 1,5 V NEDA/ANSI, 14A, IEC LR 14
	Tipo C
Número de días	5
VCL (visualizador de cristal líquido)	Tamaño 3,55 cm x 1,02 cm (1,4" x 0,4")
	5750 solamente
Espacio de la programación	1 a 3 días
Detección de pilas	El regulador dejará de funcionar cuando el voltaje de las pilas esté bajo.

Para poner y cambiar las pilas

- Use solamente pilas alcalinas, tamaño C. No use pilas recargables.
- Antes de cambiar las pilas, cierre el suministro de agua del regulador en el grifo afuera de la casa, y luego quítele del grifo.
- Abra el compartimiento de pilas y ponga las pilas de acuerdo con las marcas que hay en el compartimiento.



Para cambiar las pilas: Cuando se hayan agotado las pilas de cualquiera de los dos modelos, destellará el DEL del 5700 y lo indicará el VCL del 5750. En este momento el regulador cerrará la válvula del agua y dejará de seguir las precisas instrucciones de riego de Nelson.

Retraso automático:

Después de haber programado el primer ciclo de riego, el regulador se retrasará por 10 segundos. La visualización del regulador se despejará y mostrará "Cycle 2", (5750) indicando que se aceptó el primer programa y que ahora se puede programar el segundo ciclo. El retraso automático se repetirá después de que haya programado el segundo ciclo.

Instalación

Ya que el regulador está programado, es hora de instalar la unidad en el grifo.



1. Sujetando la unidad de modo estable, atornille el collar en el grifo hasta que esté apretado al pulso. NO use llaves ni tenazas.
2. Ponga una manguera de jardín en la conexión, debajo de la unidad. Cerciórese de que en el adaptador de la manguera haya una arandela en buenas condiciones.
3. Cerciórese de que la válvula del regulador esté cerrada. Abra el agua del grifo. El regulador regará automáticamente.

1. RESET (Reposición)

Mantenga oprimidas, al mismo tiempo, las teclas DELAY y WATER DAYS durante cuatro segundos y luego, suéltelas.

El visualizador del modelo 5750 mostrará "PRGRM" y en el modelo 5700 se verá un destello, indicando que la unidad está reajustada.

2. DELAY

Oprima la tecla DELAY para retrasar el tiempo de inicio por 1 hora. Presionando la tecla cada vez, podrá retrasar el inicio, de 1 a 20 horas, a

partir de ese momento. Nota: esta unidad no contiene reloj. El tiempo de inicio de riego se establece desde el momento actual.

Si excede el límite de 20 horas, el tiempo de retraso volverá a ser de 1 hora, y el regulador aceptará que se oprima la tecla más veces.

3. DURATION

Oprima DURATION para establecer el tiempo de riego. En el modelo 5700, cada vez que oprima esa tecla, aumentará la duración 15 minutos, por hasta 4 horas. Cuando haga lo mismo en el modelo 5750, aumentará la duración 1 minuto, por hasta 30 minutos; y 15 minutos, desde los 30 minutos, por hasta 4 horas.

Nota: tiene que oprimir esta tecla por lo menos una vez para que haya un programa válido; de no ser así, el regulador destellará continuamente o mostrará "ERR".

Si excede el límite de 4 horas, el tiempo de retraso volverá a ser de 15 minutos (5700) o de 1 minuto (5750), y el regulador aceptará que se oprima la tecla más veces.

4. WATER DAYS

Si no oprime la tecla WATER DAYS, el programa regará solamente el día de hoy. Si oprime WATER DAYS una vez, el programa se llevará a cabo todos los días; si lo oprime dos veces, día por medio; y si lo oprime tres veces, cada tres días. El horario se repetirá automáticamente hasta que usted cierre el grifo o se agoten las pilas.

Si se oprime la tecla WATER DAYS más de tres veces, el regulador volverá a dar agua hoy solamente. Las veces que oprima adicionalmente, se programarán del modo antes explicado.

5. "CYCLE 2" ("Ciclo 2") y PROGRAM ACCEPTANCE

(Aceptación del programa)

Espera 10 segundos después del último pulsado de tecla. En el modelo 5700, destellará una luz indicando que se aceptó el programa. En el modelo 5750, la visualización del regulador cambiará a "CYCLE 2". Si no precisa un ciclo de riego adicional, espere 10 segundos y la visualización cambiará a "AUTO".

Para programar el ciclo dos, espere 10 segundos después del último pulsado de tecla en el ciclo uno. La visualización del regulador mostrará "CYCLE 2". Siga programando el segundo ciclo como programó el primero.

Espera 10 segundos para que la unidad acepte los datos del programa del ciclo dos. En cuanto sean aceptados, verá la visualización cambiar a "AUTO".

Si no programa el ciclo dos antes de que la visualización "AUTO" aparezca (luego de un ciclo de programación), y decide que desearía hacerlo, debe reposicionar el regulador y comenzar de nuevo.

La visualización del regulador mostrará "ERR" si hubo algún error en la programación, tal como disponer ciclos de riego superpuestos o si se registraron instrucciones de duración para cualquiera de los dos ciclos.

